

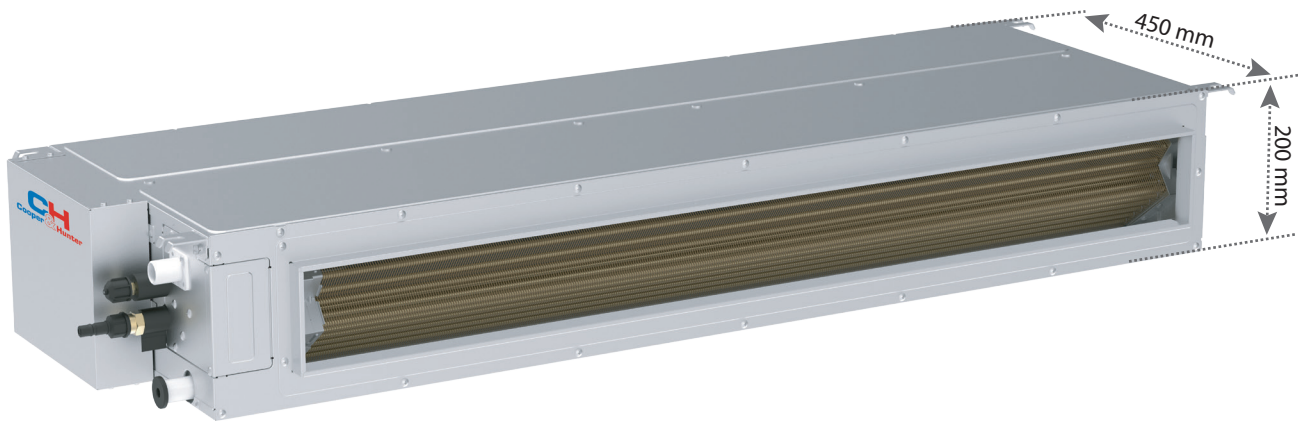
# Duct type indoor unit

The duct-type indoor unit uses a DC motor, multi-stage airflow control, and flexible and convenient installation. All this meets the requirements for various construction objects, such as hotels, office buildings, shopping centers, apartments, cottages, etc.

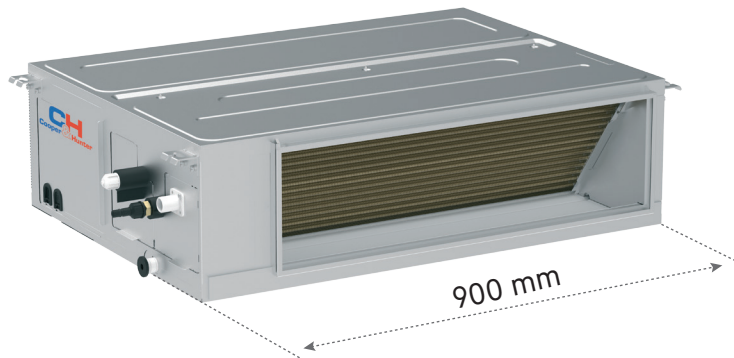
HEALTH		COMFORT MANAGEMENT				INTELLIGENT CONTROL				TECHNOLOGICAL				
Mode SLEEP	ECO-FRESH	Timer	LED display	Turbo mode	Multi speed fan	Wi-Fi	Dehumidification mode	Anti Freeze protection	Auto restart	Self diagnostics	Wired controller connection	Build-in Drine Pump	Coating BLUE-FIN	Silent mode

## Refined body of the device

The duct unit is only 200mm thick and 450mm deep, which is suitable for spaces with different heights.

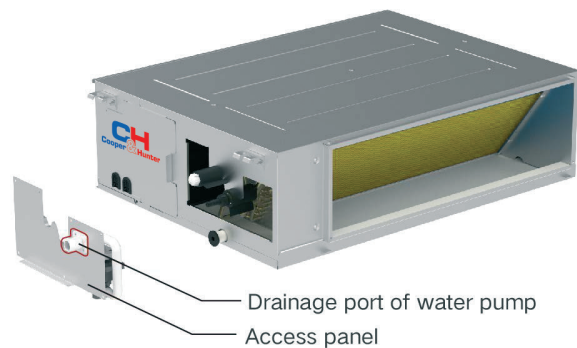
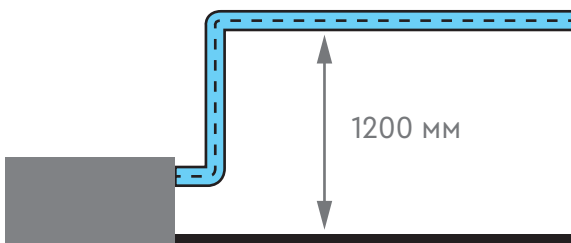


High static pressure duct units ranging from 7.1 kW to 8.5kW are only 900mm in length. They are suitable to be installed in corridors whose width is  $\leq 1.2\text{m}$ .



## Standard equipment drainage pump

The pressure of the pump for condensate removal can be up to 1200 mm, and the height of the vertical installation of the unit can be flexibly adjusted depending on the installation requirements.





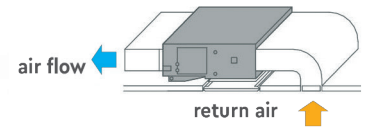
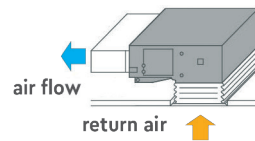
## Fresh air supply function

An air duct can be connected to the unit to supply fresh air to the room.



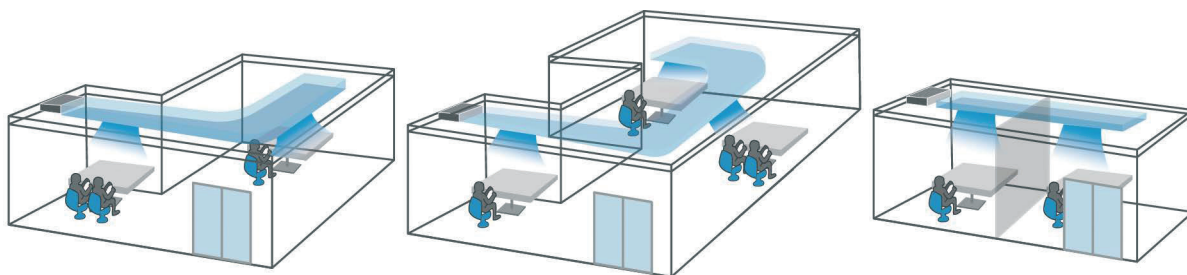
## Flexible installation

According to the location of the unit, you can choose one of two options for air intake, from below or from the side.



## Adjusting the pressure of the fan

The highest static pressure can be up to 30 Pa. From the control panel, you can change the static pressure of the fan according to the characteristics of the air duct network. 5 levels of external static pressure adjustment are available.



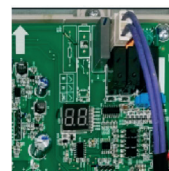
## DC motor, low noise

The brushless DC motor provides smooth speed control and can set an automatic quiet mode via a wired controller to reduce noise.

## Convenient for Wiring and Piping



Automatic fault diagnosis: equipped with a microcomputer, the unit can automatically diagnose faults and display corresponding codes (on the LED panel of the indoor unit, the main board of the outdoor unit and the wired controller) for easy maintenance.



**Easy connection:** wires can be connected by detaching the handle. There is no need to open the front panel.

**Easy pipe connections:** the entire range offers external valves, all with protective caps, for easy pipe connections.

**Built-in front cover:** simple appearance, fewer components, easy to disassemble.

Model IDU			CH-IDS35PRK2	CH-IDS50PRK2	CH-IDH71PRK2	CH-IDH85PRK2	CH-IDH100PRK2	CH-IDH125PRK2	
Model ODU			CH-IU35RK2	CH-IU50RK2	CH-IU71RK2	CH-IU85RK2	CH-IU100RK2	CH-IU125RK2	
Capacity	Cooling	kW	3.5	5.3	7.1	8.5	10.5	12.1	
		Btu/h	11900	18000	24200	29000	35800	41200	
	Heating	kW	4.0	5.6	8.0	8.80	11.5	13.5	
		Btu/h	13600	19100	27200	30000	39200	46000	
EER/COP			3.40/4.00	3.50/3.95	3.70/4.00	3.40/3.90	3.50/4.10	3.38/3.65	
SEER/SCOP			6.50/4.00	6.30/4.00	6.60/4.10	6.40/4.10	6.40/4.20	6.10/4.10	
Energy efficiency grade			A++/A+	A++/A+	A++/A+	A++/A+	A++/A+	A++/A+	
Power supply			V/Ph/Hz ~220-240/50/1						
Power input	Cooling	kW	1.03	1.51	1.92	2.50	3.00	3.58	
	Heating	kW	1.00	1.42	2.00	2.25	2.80	3.70	
Current input	Cooling	A	4.90	7.20	9.20	11.40	14.35	17.2	
	Heating	A	4.80	6.80	9.60	10.30	13.4	17.7	
Refrigerant charge volume			kg	0.57	0.85	1.50	2.10	2.25	
Indoor unit	Air flow volume (SH/H/M/L)		CFM	353/324/294/235	530/471/412/353	647/588/529/470	824/765/647/588	1000/941/824/710	1177/1059/941/824
			m <sup>3</sup> /h	600/550/500/400	900/800/700/600	1100/1000/900/800	1400/1300/1100/1000	1700/1600/1400/1200	2000/1800/1600/1400
	ESP	Rated	Pa	25	25	25	37	37	50
		Range	Pa	0-80	0-80	0-160	0-160	0-160	0-160
	Sound pressure		dB(A)	35/33/32/30	36/35/33/31	37/35/33/31	43/41/39/37	39/38/37/36	43/42/41/40
	Dimension (WxDxH)	Outline	mm	700×450×200	1000×450×200	900×655×260	900×655×260	1340×655×260	1340×655×260
		Package	mm	1008×568×275	1308×568×275	1115×772×320	1115×772×320	1568×770×323	1568×770×323
Net weight/Gross weight		kg	18.0/22.0	24.0/29.0	29.5/33.5	29.5/33.5	43.0/49.0	43.0/49.0	
Outdoor unit	Sound pressure level		dB(A)	48	52	55	57	58	
	Dimension (WxDxH)	Outline	mm	675×285×553	745×300×555	889×340×660	889×340×660	940×370×820	940×370×820
		Package	mm	794×376×605	872×398×609	1032×456×730	1032×456×730	1093×497×885	1093×497×885
	Net weight/Gross weight		kg	24.5/27.0	30.5/33.0	41.5/45.0	46.0/50.0	65.0/72.0	66.0/73.0
Connecting pipe	Outdoor diameter (Liquid pipe)		inch	1/4"	1/4"	3/8"	3/8"	3/8"	
	Outdoor diameter (Gas pipe)		inch	3/8"	1/2"	5/8"	5/8"	5/8"	
	Max. distance (Height/Length)		m	15/30	20/30	20/30	25/30	30/75	30/75

Model IDU			CH-IDH140PRK2	CH-IDH100PRK2	CH-IDH125PRK2	CH-IDH140PRK2	CH-IDH160RK2	
Model ODU			CH-IU140RK2	CH-IU100RM2	CH-IU125RM2	CH-IU140RM2	CH-IU160RM2	
Capacity	Cooling	kW	13.4	10.5	12.1	13.4	16.0	
		Btu/h	45700	35800	41200	45700	54500	
	Heating	kW	15.50	11.5	13.5	15.50	17.0	
		Btu/h	52900	39200	46000	52900	58000	
EER/COP			2.98/3.44	3.50/4.10	3.38/3.65	2.98/3.44	2.96/3.62	
SEER/SCOP			6.10/4.00	6.40/4.20	6.10/4.10	6.10/4.00	6.10/4.00	
Energy efficiency grade			A++/A+	A++/A+	A++/A+	A++/A+	A++/A+	
Power supply			V/Ph/Hz ~220-240/50/1				~380-415/50/3	
Power input	Cooling	kW	4.50	3.00	3.58	4.50	5.40	
	Heating	kW	4.50	2.80	3.70	4.50	4.70	
Current input	Cooling	A	20.60	4.8	5.7	6.80	9.20	
	Heating	A	20.60	4.45	5.9	6.80	8.00	
Refrigerant charge volume			kg	2.80	2.10	2.25	3.50	
Indoor unit	Air flow volume (SH/H/M/L)		CFM	1354/1236/1059/883	1000/941/824/710	1177/1059/941/824	1354/1236/1059/883	1529/1354/1176/1000
			m <sup>3</sup> /h	2300/2100/1800/1500	1700/1600/1400/1200	2000/1800/1600/1400	2300/2100/1800/1500	2600/2300/2000/1700
	ESP	Rated	Pa	50	37	50	50	50
		Range	Pa	0-200	0-160	0-160	0-200	0-200
	Sound pressure		dB(A)	43/42/40/38	39/38/37/36	43/42/41/40	43/42/40/38	46/44/42/40
	Dimension (WxDxH)	Outline	mm	1400×700×300	1340×655×260	1340×655×260	1400×700×300	1400×700×300
		Package	mm	1601×813×365	1568×770×323	1568×770×323	1601×813×365	1601×813×365
Net weight/Gross weight		kg	52.0/58.0	43.0/49.0	43.0/49.0	52.0/58.0	55.0/62.0	
Outdoor unit	Sound pressure level		dB(A)	59	57	58	59	60
	Dimension (WxDxH)	Outline	mm	940×370×820	940×370×820	940×370×820	940×370×820	990×370×960
		Package	mm	1093×497×885	1093×497×885	1093×497×885	1093×497×885	1153×478×1110
	Net weight/Gross weight		kg	73.0/80.0	75.0/82.0	76.0/83.0	81.0/88.0	94.0/103.0
Connecting pipe	Outdoor diameter (Liquid pipe)		inch	3/8"	3/8"	3/8"	3/8"	3/8"
	Outdoor diameter (Gas pipe)		inch	5/8"	5/8"	5/8"	5/8"	5/8"
	Max. distance (Height/Length)		m	30/75	30/75	30/75	30/75	30/75